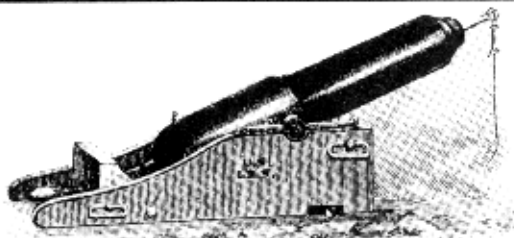
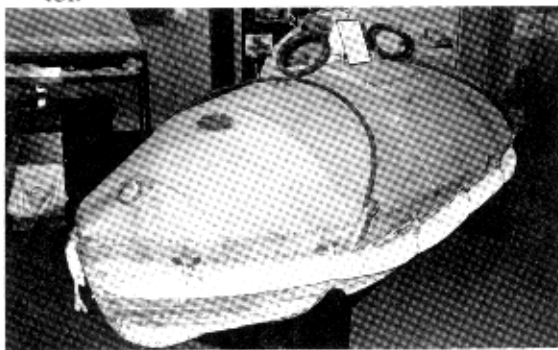


# THE U.S. LIFE SAVING STATIONS



**Lyle gun:** This was a small cannon that propelled a line from shore to the wrecked ship. It was named for its inventor.



**Life Car:** The life car is a little boat-shaped trolley that rides back and forth on a heavy rope between the wrecked ship and shore. The car is covered over to keep its passengers secure during the rescue.



**Surf boat:** If a ship was too far from shore to use the Lyle gun and life car, surf boats were launched and rowed out to the wreck.



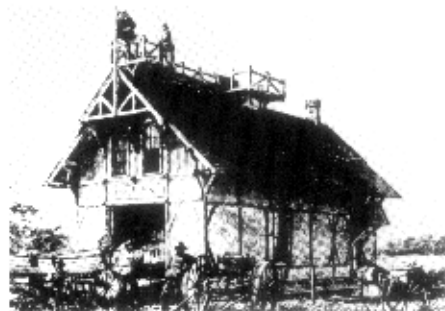
**Horse cart:** Boats were moved from the station house to the water's edge on carts, often hauled by horse.



## HEROES OF THE SURF

The U.S. Life Saving Service grew out of the need to rescue shipwrecked sailors and passengers. Life saving stations were manned by local citizens. The efforts to rescue survivors of wrecked ships sometimes called for heroic action. During one year in the late nineteenth century, there were 23 shipwrecks on the North Carolina coast, and 179 people were saved with no loss of life.

**Breeches buoy:** The breeches buoy also rides on a rope but only carries one person under normal circumstances.



Station houses were located every 14 miles along the Outer Banks. Their architecture was very distinctive.

### KEY WORDS

isolated  
inlets  
lighthouses  
navigators  
life car  
breeches buoy  
Lyle gun